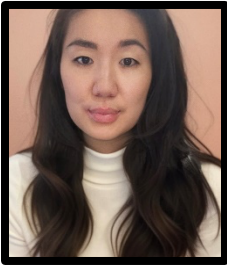




# Pacific Northwest Chapter AFCEA International

**Katherine (Kathy) L. Hsu**  
Vice President for Membership

---



Katherine (Kathy) L. Hsu is a dedicated individual who has always been driven by a strong sense of mission impact. With a deep-rooted passion for supporting the mission of government and a strong background in both technology and public service, Kathy has dedicated her career to finding innovative solutions that enhance government operations and improve public service.

A Bay Area native, Kathy graduated from the University of California Davis and started her career in the Silicon Valley. With a relentless drive to make a difference, she moved to Washington, D.C. where she immersed herself in the intricacies of federal operations, regulations, and policies. Her ability to bridge the gap between the private and public sectors, combined with her strategic vision, enabled her to successfully build the federal ecosystem and business. Kathy's efforts resulted in the implementation of innovative solutions, improved processes, and strengthened partnerships that positively impacted government agencies and the citizens they serve.

Currently, Kathy resides in Seattle, Washington with her husband, two young girls and two dogs. With her unwavering dedication and forward-thinking approach, Kathy continues to make a profound impact on the federal government and the communities it serves.

Kathy has served in AFCEA for several years including the San Diego Chapter and the Pacific Northwest Chapter. Kathy currently as the Vice President for Membership for the Pacific Northwest Chapter.

---

<https://pnw.afceachapters.org> – [info@pnw.afceachapters.org](mailto:info@pnw.afceachapters.org) – Facebook – LinkedIn